



2021

# The English World Course

In Oxford, London, Edinburgh and Cambridge  
and English World Summer Schools for Young Learners

[www.regent.org.uk](http://www.regent.org.uk)



## Why choose Regent?

- The **Regent values** of positivity, inclusivity and a results focus shine through our programmes
- You learn **English effectively** – highly structured courses lead to confidence and competence
- Our **innovative courses** go beyond language; we also build your skills, motivation and confidence
- **All ages** – summer camps for children and teenagers, and year-round schools for professionals, adults and students
- An **inclusive, academic community** – plenaries, the learning lounge, lectures and cultural events create a powerful learning environment
- **Progress** – we have regular tests and video assessments to show you your progress
- **Stylish, well equipped schools**, purposefully designed to enhance the communal learning experience
- **Service** – we are here to help and proud of our service

# Welcome to Regent

Regent was one of the first groups of English language schools in the UK, established over 50 years ago in 1964. Today Regent offers innovative courses in a choice of academically and culturally rich locations that create life-changing opportunities for our students. Fundamentally, we understand that *knowing about* English is not enough – what is important is the ability to *use* English successfully in your life.

## Positive, inclusive, results focused

Our core values shine through our programmes. We aim for a learning environment which is:

### Positive

We believe that everyone can learn to use English effectively, and whatever your current ability we push you to be a more effective communicator. We have high expectations of you and believe you are able to achieve the goals you have, and more.

### Inclusive

By being part of our learning community you are surrounded by others with similar ambitions, which helps you to bring out your best.

### Results-focused

We know that a course with Regent can change your life – helping you to excel in your job, win a promotion or a place at university. We help you to think about your future in English, perhaps helping you to clarify or enrich your goals, and through regular assessments we keep you on track to achieve the results you want.

We look forward to meeting you on a Regent course.

## Regent Promise

When you study with us you get more than just lessons in a classroom. Our programmes can be life changing. Regent promise a unique course for every learner.

- a welcome and orientation on their first day
- an individual assessment of language ability and needs
- a weekly coaching session with a personal tutor
- the opportunity to take an exam
- video feedback on their spoken performance
- a group project to develop international team working skills
- use of multi-media and study resources on all courses
- an activity and excursion programme
- counselling for future work or academic life



# Supported learning with Regent

## Your progress matters

We are passionate about your learning experience and work hard to ensure that you leave us with significantly developed skills, confidence and performance in English.

You can expect to make good progress every week. We have a strong *supported learning* framework to help you learn effectively. We have a unique academic programme, with a syllabus linked to the Common European Framework. As well as grammar, vocabulary and pronunciation, we work on your spoken performance with tasks focusing on body language, voice quality and eye contact. We ask you

to work in international teams to develop useful life skills and encourage you to take at least one exam. We set progress tests and structured homework tasks to provide clear support to your learning. On at least 4 mornings a week students join a short, thought-provoking plenary session e.g. on personal qualities, leadership or culture.

## Your teacher

Our teachers are our greatest strength and are the main reason for the success of our students. They are passionate about teaching and helping you to develop.

Whatever your level, we encourage you towards taking an external English language qualification to show your achievement. The longer you stay, the more progress you make.

	Beginner	Elementary	Elementary to Pre-intermediate	Pre-intermediate to Intermediate	Intermediate to Upper Intermediate	Upper Intermediate to Advanced
Exam options available	IELTS 1 Linguaskill	IELTS 2-3 Linguaskill	IELTS 4 Linguaskill TOEFL iBT up to 46 A2 Key	IELTS 4-5 Linguaskill TOEFL iBT 46-61 B1 Preliminary	IELTS 6-7 Linguaskill TOEFL iBT 61-100 B2 First	IELTS 8-9 Linguaskill TOEFL iBT 100-120 C1 Advanced C2 Proficiency
Common European Framework	A1	A2	A2 / B1	B1	B2	C1 / C2

## Learning outside the classroom

Learning does not only happen in our lessons but continues outside the classroom. Throughout your time with us we want to help you practise your English skills – in the learning lounge, in your accommodation and out at cultural events. That is why we make the school a welcoming and inclusive place where you can easily make friends and build your confidence in another language.

## Cultural activities and events

The cultural programme is designed to help you make new friends and discover modern local culture.

Often accompanied by your teachers or other school staff, this is the perfect way to have a great time with your friends, use your English and experience authentic local culture.

The cultural programme includes activities such as trips to museums, galleries, exhibitions or doing a sports activity.

## Choice of accommodation

### Homestay

Many students choose homestay – living with local people in their own home. Living with a family gives you the opportunity to practise what you have learned in your lessons and provides an authentic cultural experience.

### Residential accommodation

This option gives you more independence and allows you to experience life in a student university style residence.

### Hotels and apartments

We offer a range of hand-picked hotels and apartments. Please contact us for more information.





## English World Courses

- Improve your knowledge, skills and confidence in using English internationally
- Clarify and enrich your goals through personal coaching
- Learn in a maximum group size of 12

English World courses are designed to have an impact on your present and future life in an international environment. Our unique programme has five complementary elements that help you operate confidently and successfully when using English as an international language.

**Skills Training** develops your speaking, listening, writing and study skills in English in real life contexts.

**The Accuracy in Grammar** session perfects core grammar skills and works on the eradication of common errors.

**The Knowledge for a Global Community** class is at the centre of the course. Through individual and team-based research, you work on a broad range of historical, economic, sociological, artistic and cultural topics designed to equip you with the knowledge to function more effectively in the global community. You present your findings in a range of debates, presentations, and group work activities.

**The Language Focus** session builds reading, writing and vocabulary use in authentic contexts e.g. business writing for emails and reports.

In the **Confident Spoken Performance** session you develop your confidence and skills in a range of speaking situations through mini role-plays, presentations and public speaking activities. With a focus on rapport building, voice quality, body language, posture and eye contact, we help you display a confident personality in English.

### Personal Coaching

Every full time student receives an individual 15 minute coaching session each week, in which goals are set or reappraised, challenges given and progress reviewed. On longer courses we stretch learners by setting additional tasks on which the personal tutor provides feedback.

## English World

This intensive course comprises 25 hours of study per week, plus 1.5 hours of plenaries, workshops and a coaching session.

### Sample Timetable

08.45 - 09.00	Plenary
09.00 - 10.00	Skills Training
10.00 - 10.15	Break
10.15 - 11.15	Accuracy in Grammar
11.15 - 11.30	Break
11.30 - 12.30	Knowledge for a Global Community
12.30 - 13.30	Lunch
13.30 - 14.30	Language Focus
14.30 - 14.45	Break
14.45 - 15.45	Confident Spoken Performance

Timetables are samples and may be subject to change.

## English World a.m.

This course comprises 15 hours of study per week, plus 1.5 hours of plenaries and workshops.

### Sample Timetable

08.45 - 09.00	Plenary
09.00 - 10.00	Skills Training
10.00 - 10.15	Break
10.15 - 11.15	Accuracy in Grammar
11.15 - 11.30	Break
11.30 - 12.30	Knowledge for a Global Community
12.30 - 13.30	Lunch

Timetables are samples and may be subject to change.





# Examination Preparation

- IELTS and Cambridge exam preparation
- Focused study for a term, semester or academic year
- Achieve qualifications for your future in a maximum class size of 12

## IELTS Exam Preparation

The IELTS exam is recognised by universities, colleges and professional bodies for university entrance.

To be successful in this exam you need a wide range of vocabulary and syntax. Our course is designed to build these areas using engaging, authentic situations while providing plenty of exam skills and practice. Through weekly reviews and coaching, monthly tests, regular filming and mock IELTS tests we measure your progress clearly and visibly to highlight strengths, needs and objectives.

### Our course helps you to:

- be confident in handling all aspects of the exam
- express your thoughts and opinions fluently
- use grammar and vocabulary effectively
- overcome anxiety with intensive exam practice

### Add extra individual lessons

Make your course more intensive by adding 5 one-to-one hours per week for extra exam focus.

### University counselling service

We offer a free educational counselling service. Our university counsellor advises on the best courses and universities for you.

### Course dates and entry level

Courses start every Monday throughout the year. Students should arrive on the Sunday. Entry level: Intermediate

## Sample timetable

09.00 - 10.00	Skills Training
10.00 - 10.15	Break
10.15 - 11.15	Accuracy in Grammar
11.15 - 11.30	Break
11.30 - 12.30	Knowledge for a Global Community
12.30 - 13.30	Lunch
13.30 - 14.30	Examination Focus
14.30 - 14.45	Break
14.45 - 15.45	Exam Skills Spoken Performance
15.45 - 16.00	Break

Timetables are samples and may be subject to change.



## Cambridge Exam Preparation

Preparing for a B2 First, C1 Advanced or C2 Proficiency certificate helps you to master the skills you need to use English in the real world. The exams are based on real life situations where you need to use your English skills. You can take a course from 3 weeks to 10 weeks before the exam date, depending on your current ability.

### Our course helps you to:

- be confident in handling all aspects of the exam
- be able to express yourself fluently
- gain an expanded range of vocabulary
- be able to use grammar and syntax effectively
- overcome anxiety through intensive exam practice

### Add extra individual lessons

Make your course more intensive by adding 5 one-to-one hours per week for extra exam focus.

### University counselling service

We offer a free educational counselling service. Our university counsellor advises on the best courses and universities for you.

### Course dates and entry level

Courses start every Monday throughout the year. Students should arrive on the Sunday. Entry level: Intermediate

## Linguaskill Exam

A Linguaskill Business or General exam can be taken at the end of any course. It is on-line, and tests Reading & Listening, Speaking, and Writing.

## LanguageCert Exam

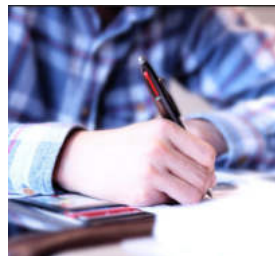
A Language Cert exam can be taken at the end of any course. There are two tests: Listening/Reading/Writing, or Speaking.



### Sample timetable

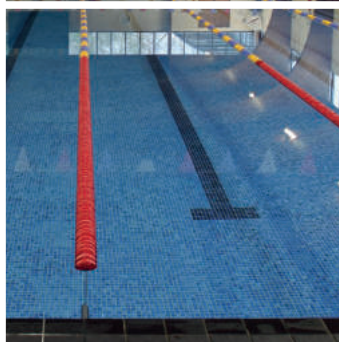
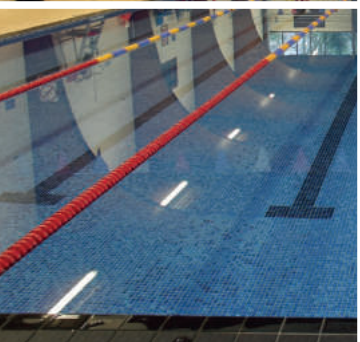
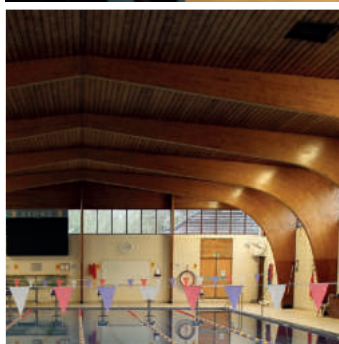
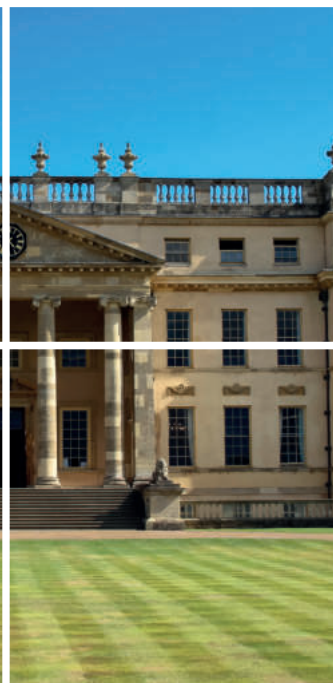
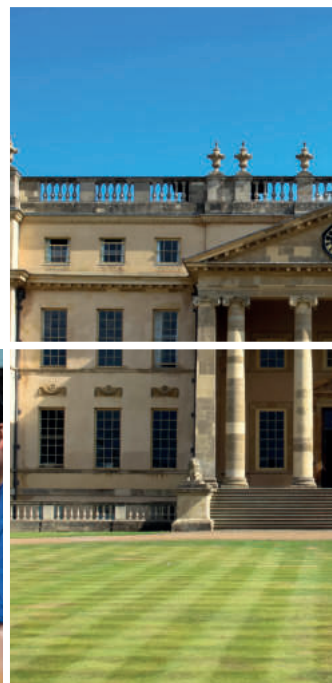
09.00 - 10.00	Skills Training
10.00 - 10.15	Break
10.15 - 11.15	Accuracy in Grammar
11.15 - 11.30	Break
11.30 - 12.30	Knowledge for a Global Community
12.30 - 13.30	Lunch
13.30 - 14.30	Examination Focus
14.30 - 14.45	Break
14.45 - 15.45	Exam Skills Spoken Performance
15.45 - 16.00	Break

Timetables are samples and may be subject to change.





King's College Cambridge



# Summer Schools for Children and Teenagers

- Dynamic, intensive immersion courses
- Stunning residential campus: Senior (age 13-17) and Junior (age 7-12) programme
- Homestay programme: Senior (age 13-17)

## The Residential Programme – Stowe School in Buckingham

The impressive Stowe School is one of England's most prestigious boarding schools. We use the stimulating educational environment and exceptional grounds for arts, culture, sports and nature activities. Stowe is 6km from Buckingham, and 45 minutes from Oxford. We run excursions to exciting and culturally significant destinations including Oxford, London and Stratford upon Avon.

## The Homestay Programme – Scanbrit School in Bournemouth

All our homestay hosts live within a 30 minute walk from school and students are placed in twin or triple rooms sharing with a room-mate of another nationality. Staying with a local homestay host allows students to learn more about everyday life in the UK and gives them a unique opportunity to speak English in real-life situations.

### Young English World – Residential (Senior 13 – 17, Junior 7 – 12)

Our Young English World course for children and teenagers is an action-packed immersion course with residential accommodation at Stowe School. From morning to night students are immersed in a stimulating educational environment.

This intensive course includes 21 hours per week of structured English language lessons and team performance projects, plus 6 hours of afternoon sports or activities. Leadership and team-working skills are followed by evening activities.

#### Typical school day – Residential

- Breakfast
- Morning meeting
- Language structure
- Language skills
- Interest based learning
- Lunch
- Homework / Review
- Performance project
- Active session
- Dinner
- Homework
- Evening activity
- Lights out

**What's included:** Full board accommodation, tuition (max 12 students per class) and activity programme, 1 full day and 1 half day excursion per week.

### Young English World – Homestay (Senior 13 – 17)

Our intensive Young English World course builds English language skills, helps develop teamworking and leadership and builds confidence in performing.

The course includes 21 hours per week of structured English language lessons and team performance projects, plus 6 hours of afternoon sports or activities.

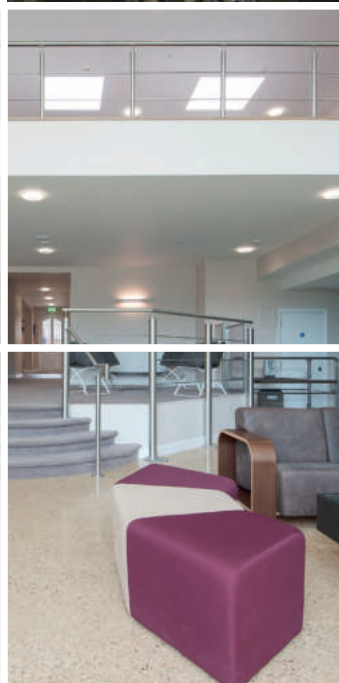
#### Exam Preparation

We offer preparation for the Cambridge B2 First and C1 Advanced exams. Students can take the exam on site during the course. The programme includes 11 hours of Exam Preparation and 10 hours of Language Structure and Skills. Afternoon sports and activities follow the learning programme.

#### Typical school day – Homestay

- Breakfast with homestay
- Seize the day!
- Language Skills
- Language Structure
- Interest Based Learning or Exam English
- Lunch at school
- Performance Project or Exam English
- Active Session
- Team-Lead
- Evening event or Evening with homestay host

**What's included:** Full board accommodation, tuition (max 12 students per class) and activity programme, 1 full day and 1 half day excursion per week.



# English World in Cambridge

- Purpose built educational environment in city centre
- Ideal for serious study in an academic setting
- Enjoy Cambridge's sophisticated architecture, arts and culture

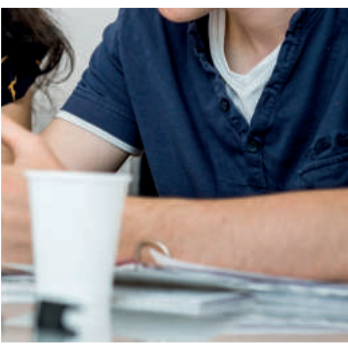
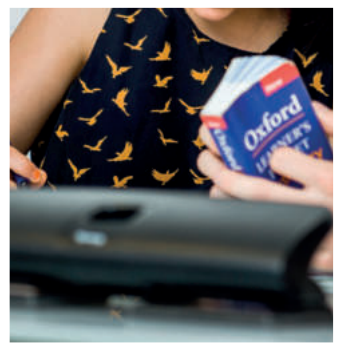
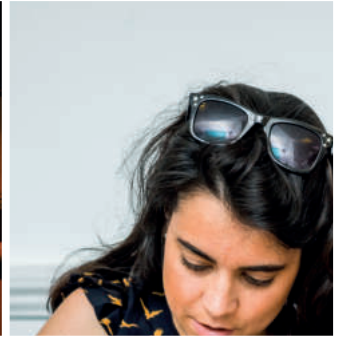
## A unique university atmosphere

One of the most famous cities for learning in the world, Cambridge is beautiful, historic and home to Cambridge University. You can visit colleges and museums, learn how to punt on the River Cam, or just relax and have fun in the city's many restaurants and bars. There is lively nightlife, and entertainment for everyone.

In the middle of one of the liveliest and most cosmopolitan areas of central Cambridge, our school has excellent facilities including a language learning lounge and large patio garden.

### Fact file

Courses	English World; IELTS Preparation; Cambridge Exam Preparation
Minimum age	16
Facilities	Wifi / internet access, student learning lounge, garden
Open all year	Except 25 Dec, 26 Dec, 1 Jan
Location	London 80 km



# English World in Edinburgh

- Impressive school building in the heart of Edinburgh
- Ideal for serious study in an historic and cultural capital
- Enjoy Edinburgh's warm, friendly and welcoming atmosphere

## A cultural experience in Scotland's capital

Edinburgh is an exciting, cosmopolitan city offering many attractions to visitors including a great many museums, galleries and buildings of historical and architectural interest. As a university city, it caters for students and offers a fantastic social life. Places of interest include Edinburgh Castle and the Scottish Parliament. The spectacular Highlands are within easy reach of the city.

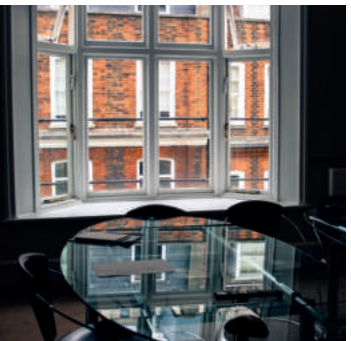
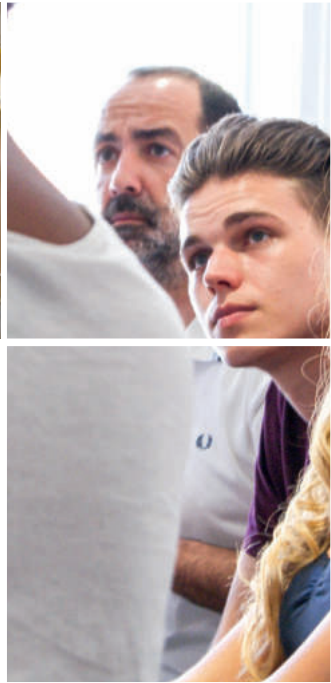
The school is located in a beautiful Georgian building in the city centre, a short walk from the famous Princes Street, Edinburgh Castle and the Botanic Gardens. The facilities include free internet access and Wifi. There is a student study centre and student common room with TV and drinks facilities.

## Our student community

We help students accomplish their goals in a highly supportive environment. We pride ourselves on offering a relevant and enriching experience.

### Fact file

Courses	English World; IELTS Preparation; Cambridge Exam Preparation
Minimum age	16
Facilities	Wifi / internet access, student study centre, student lounge
Open all year	Except 25 Dec, 26 Dec, 1 Jan
Location	City centre





# London, the seat of Regent Buckingham Street

- Magnificent school in the heart of London
- Ideal for motivated, serious learners
- Enjoy the capital's many attractions and dynamic social life

## Study in the heart of the capital

Our prestigious school has an enviable location in the very heart of the capital: a few minutes walk from Big Ben, Trafalgar Square, Covent Garden and London Theatreland.

Established in 1964, Regent London was the first Regent school. We have over 50 years' experience of teaching English so you can be sure of reaching your academic goals with us.

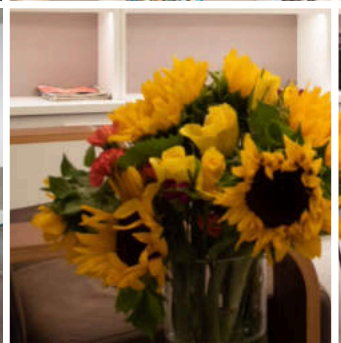
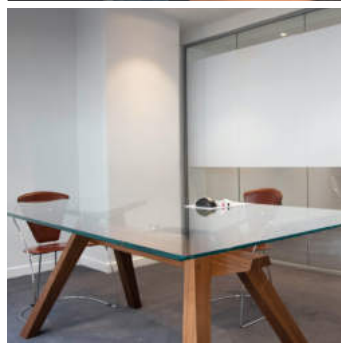
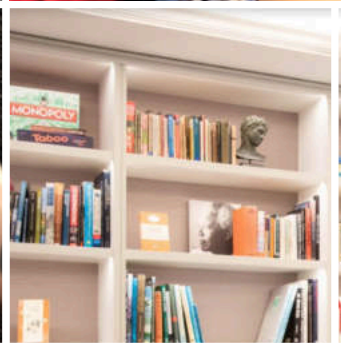
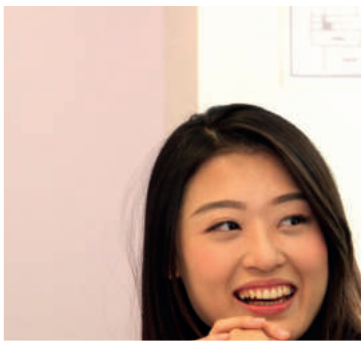
We are located in a grand historic building in a quiet street. The building belonged to the famous diarist, Samuel Pepys. It is next to Embankment Gardens and the River Thames - a quiet oasis of learning in the heart of busy London.

## Rewarding experience

The school offers an extremely comfortable learning environment. Our school team is dedicated to giving you a rewarding learning experience and enjoyable stay. As our school is truly multinational, it's easy to practise your English and mix with people and cultures from around the world.

### Fact file

Courses	English World; IELTS Preparation; Cambridge Exam Preparation
Minimum age	16
Facilities	Wifi / internet access, student lounge, language learning centre
Open all year	Except 25 Dec, 26 Dec, 1 Jan
Location	Central London



# English World in Oxford

- World famous university city
- Impressive school with modern facilities
- Enjoy Oxford's elite academic atmosphere

## Experience a city rich in history

Oxford is world famous for its university, and it has a huge amount to offer its visitors. There are lots of cultural events, a lively social scene, beautiful buildings and a variety of international restaurants. The city is steeped in history and the air of academic excellence is reflected in our school's culture. Students often comment that the unique atmosphere of the school is both professional and personal.

The school is situated in the centre of the city. We offer an exciting cultural programme with plenty of academic, social and cultural events as well as weekend excursions.

## Learning experience

Regent Oxford is a centre of academic excellence for which we have been renowned locally and internationally since we were established in 1953. Our goal is to provide you with a learning experience that has an immediate impact and a lasting effect on your life.

### Fact file

Courses	English World; IELTS Preparation; Cambridge Exam Preparation
Minimum age	16
Facilities	Wifi / internet access, computer suite, library, student lounge
Open all year	Except 25 Dec, 26 Dec, 1 Jan
Location	Oxford city centre 1.5km, London 80km

# Terms and Conditions

## 1. Definitions

1.1 When the following words with capital letters are used in these Terms, this is what they will mean:

Booking: your booking for one of Our Courses;

Courses: the language training courses and associated services advertised on Our website;

Deposit: the sum of 300 GBP;

Event Outside Our Control: is defined in clause 8.2;

Fees: the fees payable by you in respect of your Booking;

Terms: the terms and conditions set out below;

We/Our/Us: Instill Education Limited (trading as "Regent") a company registered in England and Wales under company number 01293463 and having its registered office at 14 Friars Entry, Oxford, OX1 2BZ United Kingdom.

1.2 When We use the words "writing" or "written" in these Terms, this includes e-mail unless We say otherwise.

## 2. Bookings

2.1 Bookings can be made by completing and submitting the form on Our website together with payment of your Deposit or the total Fees (as applicable, see clause 3.1).

2.2 Please ensure that you read these Terms carefully, and check that the details of your Booking are complete and accurate, before you make your Booking. If you think that there is a mistake, please contact Us to discuss. We will confirm any changes in writing to avoid any confusion between you and Us.

2.3 When you make a Booking with Us, this does not mean that We have accepted it. Our acceptance of the Booking will take place as described in clause 2.4. If We are unable to confirm your Booking, We will inform you of this.

2.4 These Terms will become binding on you and Us when we confirm your Booking in writing to you, at which point a contract will come into existence between you and Us. We will assign a unique reference number to your Booking and inform you of it when We provide confirmation. Please quote this number in all subsequent correspondence with Us relating to your Booking.

## 3. Payment of Fees

3.1 Where the Course is due to begin more than six weeks from the date of your Booking, a Deposit is payable at the time of making your Booking. Where the Course is due to begin less than six weeks from the date of your Booking, the Fees must be paid in full at the time of your Booking.

3.2 When We confirm your Booking under clause 2.4, We will provide a statement showing the balance of the Fees due to be paid, which should be settled at least four weeks before the Course starting date. Please note that you will not be allowed to attend any Course unless payment of the Fees has been made in full.

3.3 All Fees must be paid in Sterling (GBP). All bank charges are payable by you.

3.4 All refunds due under these Terms will be paid to the person from whom payment was originally taken, using the same method of payment as used by them.

## 4. Changes to Bookings

4.1 If you wish to change your Booking by switching to another Course, you must provide at least 10 days' notice of such change to Us in writing, otherwise you will be expected to attend the Course originally booked or cancel your Booking under clause 7.

4.2 Where you have given the appropriate notice under clause 4.1:

(a) We will refund any difference between the cost of the original Booking and your revised Booking on the last date of the Course to which you have switched (whether or not you remain on the Course for its full duration); or

(b) You may be required to pay any difference between the cost of the original Booking and your revised Booking at the time of your request.

4.3 If you wish to take a holiday at any time during the Course, you must give Us at least two weeks' notice in writing. No refunds are payable in these circumstances.

4.4 We reserve the right to cancel a Course, or make changes to course arrangements, as a result of Events Outside Our Control. Clause 8 will apply in such circumstances.

## 5. Our liability to you

5.1 Where We provide any assistance to you in making travel and accommodation requirements, We do so only as an intermediary between you, travel organisations and host families. Unless and to the extent caused by Our negligence, We will not be liable to you for any losses arising from any delays or failures relating to travel and accommodation arrangements. We will, however, use our reasonable endeavours to defend your interests and mediate on your behalf in the event of any breach of contract on the part of a travel organisation or host family.

5.2 If We fail to comply with these Terms, We are responsible for loss or damage you suffer that is a foreseeable result of Our breach of the Terms or Our negligence, but We are not responsible for any loss or damage that is not foreseeable. Loss or damage is foreseeable if it is an obvious consequence of Our breach or if it was anticipated by you and Us at the time we entered into this contract.

5.3 We do not exclude or limit in any way Our liability for death or personal injury caused by Our negligence or the negligence of Our employees, agents or subcontractors, or for any liability which cannot be excluded or limited by law.

## 6. Insurance, accommodation, students visas and study permits

6.1 You are responsible for arranging your own travel and medical insurance (including the costs of repatriation in the case of illness or accident) and student visitor visa.

6.2 If you are denied a student visitor visa and provide Us with a copy of the rejection letter on or before the first day of the Course, the We will refund all Fees paid.

6.3 Accommodation will begin on the Sunday before the Course starts and will end on the Saturday after the Course ends. If you have asked Us to arrange host family accommodation, you will receive details of your host family address at least five days before the Course starting date (unless you have made a late Booking) to enable you to inform the host family of your approximate time of arrival.

## 7. Your rights to cancel and applicable refund

7.1 You have the following rights to cancel your Booking:

(a) you have a legal right to cancel your Booking within 14 calendar days of the date of your Booking, in which event We will, subject to clause 7.3, refund all of the Fees including the Deposit; or

(b) you may cancel your Booking at any time after the period of 14 calendar days referred to in clause 7.1(a) but before the Course has begun, in which event We will retain the Deposit and refund the balance of any Fees paid by you.

7.2 To exercise your rights to cancel under clause 7.1, you must inform Us of your decision by making a clear statement to this effect by completing the cancellation form on Our website or by contacting Us.

7.3 The law requires us to obtain your express consent to Us providing Our services where the starting date of the Course falls during the 14 day cancellation period referred to in clause 7.1(a). By making your Booking, you will be treated as giving this consent. You

acknowledge that if you subsequently cancel, We will be entitled to deduct an amount from the Fees paid which is in proportion to the services that We have performed up to the date of your cancellation.

7.4 Once a Course has begun, you may cancel your Booking with immediate effect by giving Us written notice if:

(a) We break this contract in any material way and We do not correct or fix the situation within 30 days of you asking Us to do so in writing;

(b) We go into liquidation or a receiver or an administrator is appointed over Our assets; or

(c) We are affected by an Event Outside Our Control.

## 8. Our rights to cancel and applicable refund

8.1 We will not be liable or responsible for any failure to perform, or delay in performance of, any of Our obligations under these Terms that is caused by an Event Outside Our Control.

8.2 An Event Outside Our Control means any act or event beyond Our reasonable control including but not limited to strikes or other industrial action, civil commotion, terrorist attack or threat of terrorist attack, epidemic, adverse weather conditions or other natural disasters.

8.3 If an Event Outside Our Control takes place that affects the performance of Our obligations under these Terms:

(a) We will contact you as soon as reasonably possible to notify you; and

(b) We will, where possible, propose alternative arrangements (which may include alternative dates or venues) for the Course.

8.4 You may cancel your Booking if any alternative arrangements proposed by Us are unsuitable for any reason, in which case We will refund all Fees paid in advance for the Course.

8.5 We reserve the right to refuse your attendance on the course if you are suffering from any illness, medical condition or mental or physical disability which was not disclosed at the time of Booking.

8.6 We expect students to behave reasonably at all times towards other students, school staff and accommodation providers and to respect cultural, racial and religious differences. If We have to ask you to leave the school because your behaviour is unacceptable, you will not be entitled to any refund of fees. Unacceptable behaviour includes unsatisfactory attendance or work, aggressive physical or verbal behaviour towards other students or members of staff, drug abuse, dishonesty, criminal behaviour or deliberately causing damage to the school premises or accommodation. We expect all students to adhere to the standards and rules We set. If We deem your behaviour unacceptable or have asked you to leave the school you will not be allowed to remain in accommodation We have arranged.

## 9. How we may use your personal information

9.1 We will use the personal information (including sensitive information about your health, religious beliefs and practices or dietary requirements) that you provide to Us:

(a) to administer and provide Our Courses to you;

(b) to process payment in relation to any Booking;

(c) for internal training and monitoring purposes; and

(d) to inform you about similar Courses and other services that We provide, but you may stop receiving these at any time by contacting Us.

9.2 We will not give your personal data to any third party other than:

(a) as strictly necessary for Us to perform Our contract with you;

(b) to host families; or

(c) to the schools and offices within our group companies (which means our subsidiaries, our ultimate holding company and its subsidiaries, as defined in section 1159 of the UK Companies Act 2006) including those outside the European Union.

9.3 You have the right to access information held about you. Your right of access can be exercised in accordance with the Data Protection Act 1998. Any access request may be subject to a fee of £10 to meet Our costs in providing you with details of the information We hold about you.

9.4 We may wish to use photographs and audio visual media containing your image or likeness in our marketing and promotional materials and you hereby consent that We may do so in all and any media for such purposes. If you would prefer that We do not, you should notify Us by completing the relevant section of the registration form. We will also confirm this with you where we have a reasonable opportunity to do so. Copyright in any photographs or audio visual media continuing your image or likeness shall belong to Us and shall not entitle you to receive any royalties or other payments.

## 10. Specific terms for Young Learners (7-17 years)

10.1 We reserve the right to issue disruptive students with a warning letter and, if there is no improvement in behaviour, to send them home at their parents' or guardians' expense.

10.2 We further reserve the right to send home without a warning letter any student committing a serious offence, especially offences involving the police, including theft, smoking in any school building and the possession, purchase or consumption of alcohol or illegal drugs.

10.3 For children who will stay with host families, parents may indicate on the registration form whether they authorise their child to stay out in the evenings without supervision. Generally, this means that children aged 12 and under are not allowed out unsupervised after their evening meal; those aged 13 and above must return by 21.30 outside the summer, and by 22.00 in the summer. However, students must also respect the house rules of the host family, where these times may inconvenience the family. Children on residential courses have evening activities and are not allowed to stay out unsupervised. Please note We cannot be held responsible for any incident whilst the student is out unsupervised.

10.4 Students aged 18 and over must register for an adult school. We reserve the right to transfer an 18 year old from a young learners' Course.

## 11. Other important terms

11.1 These Terms set out the entire agreement between you and Us relating to your Booking.

11.2 We may transfer Our rights and obligations under these Terms to another organisation, and We will always notify you in writing if this happens, but this will not affect your rights or Our obligations under these Terms.

11.3 This contract is between you and Us. No other person shall have any rights to enforce any of its terms.

11.4 Each of the clauses in these Terms operates separately. If any court or relevant authority decides that any of them are unlawful, the remaining paragraphs will remain in full force and effect.

11.5 If We fail to insist that you perform any of your obligations under these Terms, or if We do not enforce Our rights against you, or if We delay in doing so, that will not mean that We have waived Our rights against you and will not mean that you do not have to comply with those obligations. If We do waive a default by you, We will only do so in writing, and that will not mean that We will automatically waive any later default by you.

11.6 These Terms are governed by English law. You and We both agree to submit to the non-exclusive jurisdiction of the English courts.

# Enrolment Form

## Choose your location, course and dates

Please choose your course:

- English World  
 English World a.m.
- IELTS Exam Preparation  
 Cambridge Exam Preparation FCE  
 Cambridge Exam Preparation CAE  
 Cambridge Exam Preparation CPE

Additional one-to-one hours per week  5 hours per week

Location:  London  Cambridge  Edinburgh  Oxford

Young English World  Stowe 7 - 12  Stowe 13 - 17  Scanbrit - Homestay 13 - 17

Course start date: \_\_\_\_\_ Course finish date \_\_\_\_\_

## Choose your accommodation

Homestay single room  Homestay en-suite  Hotel  Residence  No accommodation

Accommodation start date: \_\_\_\_\_ Accommodation finish date: \_\_\_\_\_

Please tell us about any special requirements (eg: disability, allergies, diet) \_\_\_\_\_

Do you smoke?  Yes  No Would you prefer non-smoking accommodation?  Yes  No

What is your level of English?

Beginner  Elementary  Pre Intermediate  Intermediate  Upper Intermediate  Advanced  Very Advanced

Have you studied with Regent before?  Yes  No Which School? \_\_\_\_\_ When? \_\_\_\_\_

## Transfers

Would you like a taxi transfer to your accommodation?

Yes on arrival  Yes on departure  Yes on arrival and departure  No

Arrival: Airport/Station \_\_\_\_\_ Flight number \_\_\_\_\_ Date (dd/mm/yy) \_\_\_\_\_ Time \_\_\_\_\_

Departure: Airport/Station \_\_\_\_\_ Flight number \_\_\_\_\_ Date (dd/mm/yy) \_\_\_\_\_ Time \_\_\_\_\_

## Documents by courier

We can send your documents to you by email, fax or post. If you would like them sent by international courier we charge £50.

I would like my documents sent by international courier (£50).

## Calculating your fees

I would like to pay the full fees  I would like to pay deposit of £300 now and the full fees 30 days before the course starts

Course fee \_\_\_\_\_

Additional one-to-one lessons \_\_\_\_\_

Accommodation fee \_\_\_\_\_

Transfer fee \_\_\_\_\_

Documents sent by courier fee \_\_\_\_\_

Total cost \_\_\_\_\_

## Personal Details (Please write in CAPITALS)

Family Name	First Name		
Nationality	Occupation	Date of Birth	
<input type="checkbox"/> Male <input type="checkbox"/> Female Age	First Language	Second Language	
How did you hear about Regent?			
Who is paying for your course?	<input type="checkbox"/> Myself	<input type="checkbox"/> Parents	<input type="checkbox"/> Company <input type="checkbox"/> Other
Name in Passport	Passport Number		
Home Address			
Email	Tel	Mobile	Fax
Address for invoice (if different)			
Emergency Contact During Course			
Relationship to student	English spoken <input type="checkbox"/> yes <input type="checkbox"/> no	Tel	Email
Reason for studying	<input type="checkbox"/> Academic	<input type="checkbox"/> Professional	<input type="checkbox"/> Other
Name of your college/university (students)			
Name of your company (professionals)			

## Method of Payment (please tick)

Cheque (UK £ Sterling only)  Credit/Debit Card  Bank Transfer  Cash

### Cheque (UK £ Sterling only)

Drawn on British Bank made payable to Instill Education Ltd. Please write student's name on the back of the cheque.

### Credit Card Visa Mastercard

I hereby authorise Regent to charge the deposit of: £300 to my card

I hereby authorise Regent to charge the balance of: £ to my card 30 days before the course starts

I hereby authorise Regent to charge the full amount of: £ to my card now

Card number  Security Code  (last 3 digits on reverse of card)

Valid from   Expiry date

Name of cardholder

Address of cardholder

Signature of cardholder

## Your agreement and signature

1. I have read and understood the Terms and Conditions.
2. I certify that all the information given by me in this enrolment form is accurate and complete.
3. If applicant is under 18, a parent or guardian must sign this form.  
In doing so, the parent or guardian agrees to the Terms and Conditions.
4. I agree to the use of my personal information, including health and religious or dietary requirements, set out in the terms and conditions.  Yes  No
5. I agree that you can send me occasional information about Regent Language Training courses and services.  Yes  No

Signature of student

Date

Signature of parent or guardian (If student is under 18)

Date

## Internationally recognised English language exams for academic and specific purposes

Exam	Level
<b>IELTS</b>	It is mainly used to show ability from intermediate to advanced: you receive a test report that shows an overall score from 1 (non-user) to 9 (expert user).
<b>TOEFL</b>	The iBT test shows your ability on a scale of 1-120. Each section, Reading, Listening, Speaking and Writing, is scored out of 30 and combined to give your total score.
<b>Cambridge English Exams:</b> Cambridge English: B2 First (FCE)	An upper intermediate exam that tests your ability to deal confidently with a range of written and spoken communication situations.
Cambridge English: C1 Advanced (CAE)	An advanced exam that tests your ability to communicate with confidence in English for work or study purposes.
Cambridge English: C2 Proficiency (CPE)	A very advanced level exam, for learners who have achieved a high level of language skills.
<b>Linguaskill</b>	A Linguaskill Business or General exam can be taken at the end of any course. It is on-line, and tests Reading & Listening, Speaking, and Writing.
<b>LanguageCert International ESOL</b>	A Language Cert exam can be taken at the end of any course. There are two tests: Listening/Reading/ Writing, or Speaking.



Regent Language Training  
[info@regent.org.uk](mailto:info@regent.org.uk)  
+44 (0) 1865 258 333  
[www.regent.org.uk](http://www.regent.org.uk)